

# Choose Fair Trade ... choose Eco!



## SHARED EARTH

Fair Trade, Eco & Ethical Gifts  
*We are tackling climate change!*

### WHOLESALE

## AUGUST 2023

### Supplementary Catalogue



Shared Earth sells Fair Trade, eco-friendly and ethical products. Our mission is to tackle the climate crisis and create a fairer, more sustainable world.

[www.sharedearth-trade.co.uk](http://www.sharedearth-trade.co.uk)  
call: 01904 670321 email: [sales@sharedearth.co.uk](mailto:sales@sharedearth.co.uk)





# Welcome to our autumn 2023 catalogue!



**SHARED EARTH  
GUARANTEED  
FAIR TRADE**

**Introduction** page **3**

**Homeware** page **4**

**Home & Garden** page **14**

**Fairer, sustainable world** page **18**

**Fragrance** page **20**

**Inspire** page **21**

**Jewellery & Accessories** page **24**

**Christmas** page **27**

**Gift** page **41**

Throws & cushions, mango wood, aluminium collection, rag rugs, laundry baskets, mosaics, glass teak root

Dreamcatchers, bamboo windchimes, recycled glass mobiles

Join us to raise £70,000 for eco/Fair Trade causes!

Incense holders, oil burners, lotus pebbles, chakra pillboxes,

Soapstone incense holders, pebbles, iron bells

Bags, rainbow wool, earrings, jute bags

Nativities, wood pendants, candle holders, bamboo socks, stockings, finger puppets, scents, star lanterns, African angels & santas

Wooden birds, green man, Balinese animals, soapstone t-lites and oil burner, paper mache, worry dolls, incense gift sets, cards and chocolate!

## How to Order...

Online: [www.sharedearth-trade.co.uk](http://www.sharedearth-trade.co.uk)

Post: 1 Minster Gates, York, YO1 7HL

Email: [sales@sharedearth.co.uk](mailto:sales@sharedearth.co.uk)

Telephone: 01904 670321

**FREE**

Delivery on UK  
Orders over £300

Discounts on Orders Over:

£1,000 : 5% OFF

£2,500 : 10% OFF

No Minimum  
Order  
Requirement!

*Help us  
create a  
fairer, more  
sustainable  
world...*

## Carbon-neutral shipping

Shipping products around the world, using fossil fuels, is one of the main ways the gift industry contributes to global warming. Globally, transport accounts for 15% of all CO2 emissions, and 80% of the energy we use comes from fossil fuels. *Our shipping is carbon-neutral.*

We pay global leader GoodShipping to neutralise our emissions by fuelling other ships with biofuels, to the same volume and distance as our shipments from India, Thailand, Peru etc. We do the same for shipments from our warehouse in Suffolk to you, our customers, using data provided by the freight companies we use. Through this process we're saving about 50 tonnes of CO2e (WtE) each year.

We all need to tackle the climate crisis – are your other suppliers doing anything similar?



## Hello, dear customers

Firstly, we'd like to apologize for the delays with orders over the last few months while we've been completing our warehouse move. This has been a big process and we still have work to do, but we're confident that going forward it will significantly improve the service you receive from us in terms of order lead time. Orders are now dispatching within 5 working days, and we'll be doing our best to continue improving this over the coming months.

As to products, in March we made our first trip abroad since before covid, to Bali, and you'll see in these pages the result - some fantastic mosaics, dreamcatchers, recycled glass bowls and windchimes, bamboo chimes, and 'green men', which represent renewal, growth and spiritual awareness. Recycling and sustainability are still top on our agenda.

We introduce two new suppliers in this catalogue, Holyland Handicrafts Cooperative (sustainable olive wood from Palestine), and Cocoa Loco (organic Fair Trade chocolate). We hope you like their products. Buying and selling is not just about making money - at least it shouldn't be. We can use trade as a means to make our world a better place. To do so makes our lives happier, and it's a positive legacy we can leave for our children and grandchildren.

On that note, I'm getting old! Yes, I'm 70 this year; please turn to page 18-19. We are trying to raise £70,000 for causes we believe in, to help create a fairer, sustainable world. With your help, both as individuals and as businesses, we will succeed - please support us!

Very best wishes,

Jeremy Piercy  
Founder and MD, Shared Earth



We are tackling climate change!



Jewellery artisans, Tara Projects, India



Packing products at Yuli's warehouse, Bali

## Carriage Charges

Location	Prices			
	Free	£7.95	£14.95	£19.95
UK Mainland (excluding Scottish Highlands, Islands & Northern Ireland)	Orders over £300	Orders under £300	NA	NA
Republic of Ireland, Northern Ireland Scottish Highlands and islands, Isle of Man, Jersey & Guernsey	Orders over £350	NA	Orders under £350	NA
Europe: Netherlands, Belgium, France, Germany Austria, Spain, Czech Republic, Luxembourg, Denmark, Switzerland, Italy	Orders over £500	NA	Orders under £500	NA
Europe: Finland, Norway, Sweden, Portugal, Greece, Hungary, Lithuania, Latvia, Estonia, Slovenia, Romania	Orders over £750	NA	NA	Orders under £750
Rest of World and rest of Europe	Carriage will be charged at cost			

\*\* Note - for customers outside UK Mainland we reserve the right to charge additional carriage in exceptional circumstances, for example where particularly bulky products have been ordered. This will only be in exceptional circumstances and you will be made aware of any additional carriage charges prior to making payment for your order.





## Throws and cushion covers

From our Fair Trade supplier Asha Handicrafts in Mumbai, India. We're introducing 2 new designs to our recycled cotton throws and cushion covers.

They're perfect for the cooler months - wrap up warm by the fire with a hot chocolate.

Brighten up your furniture with the multi-coloured diamond design - a good addition to our multi-coloured current range.

Available in 2 different sizes and presented folded with a bow making for a perfect gift.

As climate change awareness grows, RECYCLING is more and more on trend.

NEW



**ASH150**  
autumnal recy cotton  
throw 150x125cm



**ASH151**  
autumnal recy cotton  
throw 200x150cm



**ASH152**  
autumnal recy cotton c  
cover 40x40cm



**ASH154**  
diamond multicol recy  
cotton throw 200x150cm



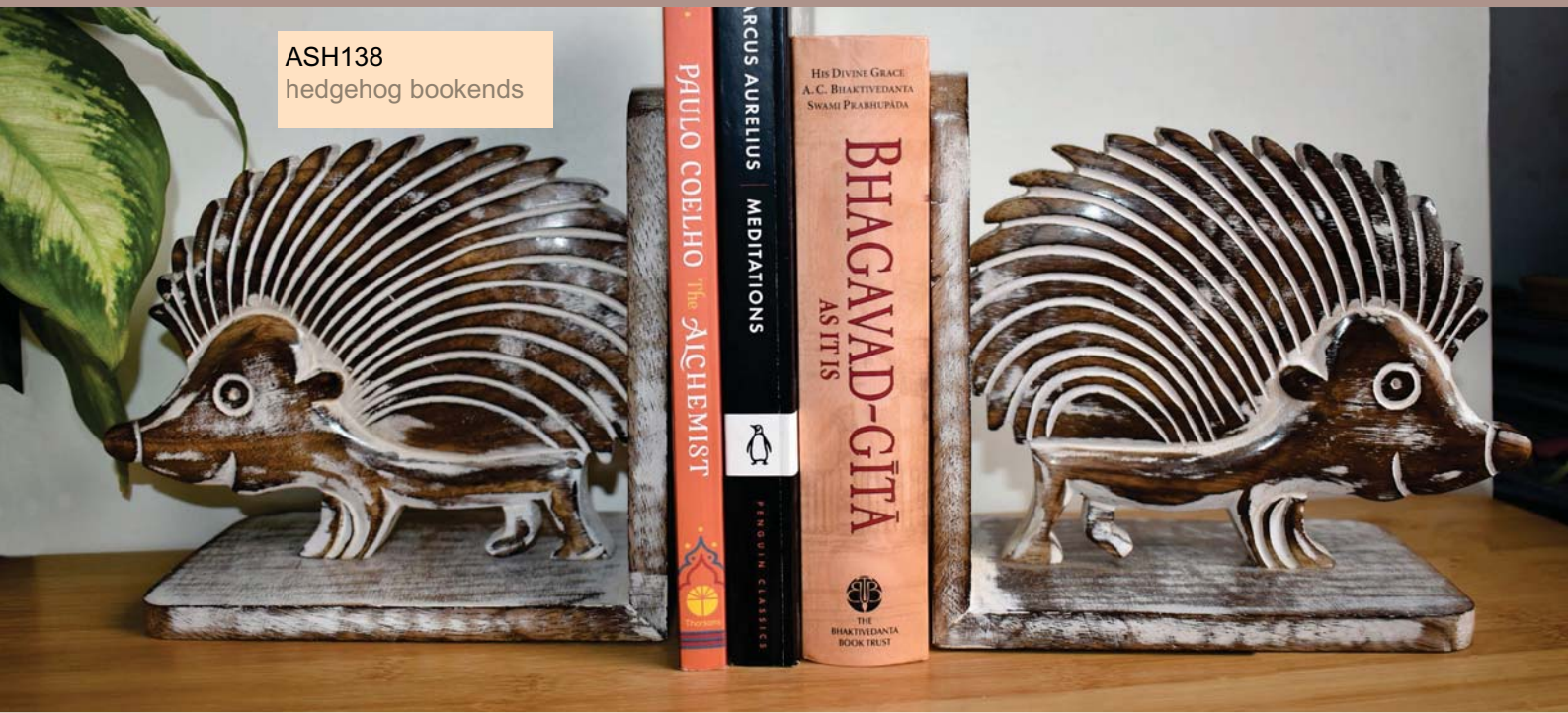
**ASH153**  
diamond multicol  
recy cotton throw  
150x125cm



**ASH155**  
diamond multicol recy  
cotton c cover 40x40cm



ASH138  
hedgehog bookends



## Woodland mango wood selection

More woodland themed mango wood items from Asha Handicrafts. In January, we introduced the woodland theme and have been really keen to expand on this range since it is so popular!



NEW



ASH135  
jewellery chest  
31x16x116cm



ASH134  
4-drawer chest  
25x16x31cm



ASH137  
coaster round (single)



ASH139  
hedgehog large frame  
31x8x25cm



ASH136  
box 10 x 10 x 7cm





**ASH117**  
coaster set  
13x13cm



## Aluminium elephant design selection

**ASH110**  
box  
10x10x6cm

These aluminium products have really caught our eye with their intricate decorative work. We hope you like them as much as we do.



**ASH111**  
box double  
15x10x6cm



**ASH112**  
trunk box  
13x9x7cm



**ASH113**  
box  
15x15x6cm



**ASH114**  
box double  
10x10x6cm



**ASH116**  
key hook 13x11cm



**ASH118**  
frame 20x25cm



**ASH115**  
jewellery box 21x22x7cm



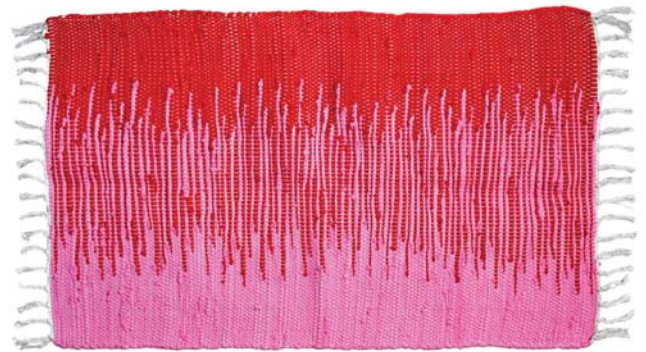


NEW

## Ombre Recycled rag rugs

Our recycled rugs are a bestselling range so we're updating them with these contemporary 'ombre' designs, especially effective in minimalist settings. Long lasting and top quality.

We're delighted to announce that our supplier Aspiration is now a pending member of WFTO (World Fair Trade Organisation). Aspiration was founded by Padam Kapoor (now retired), an expert in Indian handicrafts who was for many years an advisor to the Indian government.



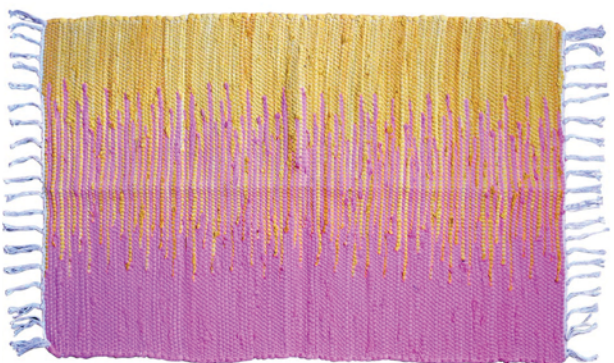
ASP2367  
60x90cm

ASP2368  
80x120cm



ASP2369  
60x90cm

ASP2370  
80x120cm



ASP2371  
60x90cm

ASP2372  
80x120cm







## More recycled rag rugs

NEW



ASP2390  
rag rug blue cream red  
50 x 90cm



ASP2391  
rag rug blue cream red  
80 x 120cm



## Recycled polyester rag rugs

Perhaps darker and more bolder colours are your style?

As we continue on our quest to combat climate change, we are prioritising products which make use of discarded, waste materials. These rugs do just that, as well as providing an income for many artisans who would otherwise struggle to find work.



ASP2392  
rag rug recy polyester  
90 x 60cm

ASP2393  
rag rug recy polyester  
120 x 80cm



# Laundry baskets

These large robust baskets are made out of Kaisa grass, a sturdy wild grass, which grows along the river banks in Bangladesh.

They make a wonderful home for everything from dirty laundry to children's toys to blankets or even firewood.

The supplier, Prokritee, supports over 1,500 artisans in rural ares of Bangladesh, mostly women. They specialise in sustainable materials like waste jute, recycled saris, natural fibres and leaves.

NEW



**PROK120**  
laundry basket  
set 3 kaisa grass  
blue/natural



**PROK121**  
laundry basket kaisa  
grass set of 3 recy sari





# Mosaics from Bali

Our visit in March this year was the first since before Covid, and we found so many new designs that it was hard to choose!

Made using recycled glass and eco-friendly albesia wood, these mosaic mirrors look stunning and make excellent Christmas presents.

NEW



JCQ01  
mirror rainbow 25cm



JCQ02  
mirror rainbow 40cm



JCQ03  
mirror thin stripes 40cm



JCQ04  
mirror dual colours 40cm



JCQ05  
bowl yellows blues etc 30cm

## Speckled range with multi-coloured mosaics



BJ01  
incense holder leaf



BJ02  
incense holder curved



BJ03  
incense holder triangle



BJ04  
incense holder round



BJ05  
incense holder star



BJ06  
incense holder heart





**BJ07**  
mirror hamsa hand 20cm



**BJ08**  
mirror hamsa hand 30cm



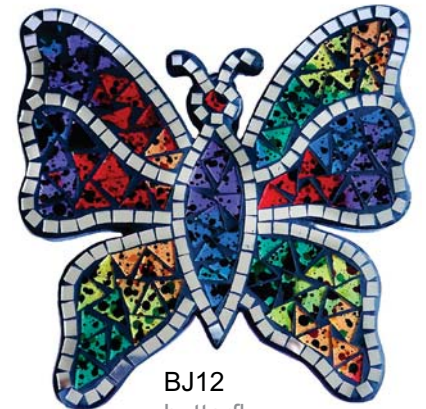
**BJ09**  
mirror oval 20 x 30cm



**BJ10**  
dragonfly  
30x30cm



**BJ11**  
elephant  
20x20cm



**BJ12**  
butterfly  
20x20cm



**BJ13**  
mirror 20cm dia



**BJ14**  
mirror 30cm dia



**BJ15**  
turtle  
20x23cm



# Sun designs

As part of the new mosaic range, we have bright sun designs. Jewellery box, coasters, mirror, bowl and plates - a brilliant range of gifts to brighten up anyone's home.

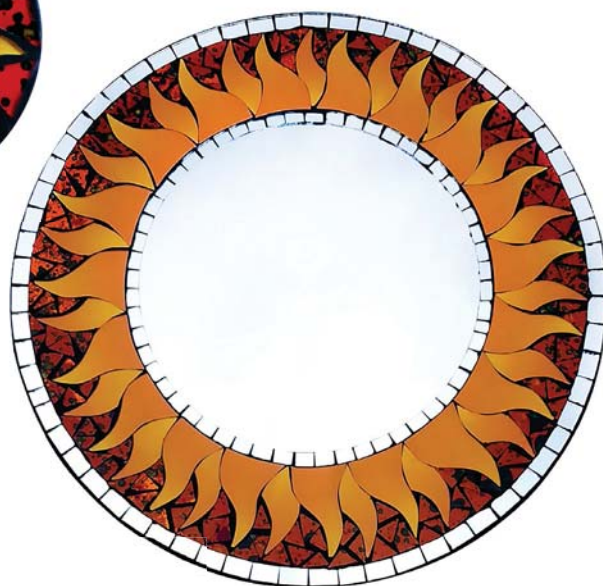


NEW

MOSUN01  
box w mirror  
18x14x6.5cm



MOSUN02  
coaster set of 4



MOSUN03  
mirror 40cm dia



MOSUN04  
bowl 30cm dia



MOSUN05  
plate sq 30cm



MOSUN06  
plate sq 20cm



## Molten coloured glass and teak root

These handblown glass bowls are made from recycled glass, and discarded tree roots. Each one is a different shape, moulded to the shape of the tree roots. The glass is frosted and will look fantastic with fairy lights added, great for the Christmas season.



**SB01G**  
17-21cm ht green

NEW



**SB01LG**  
17-21cm ht blue



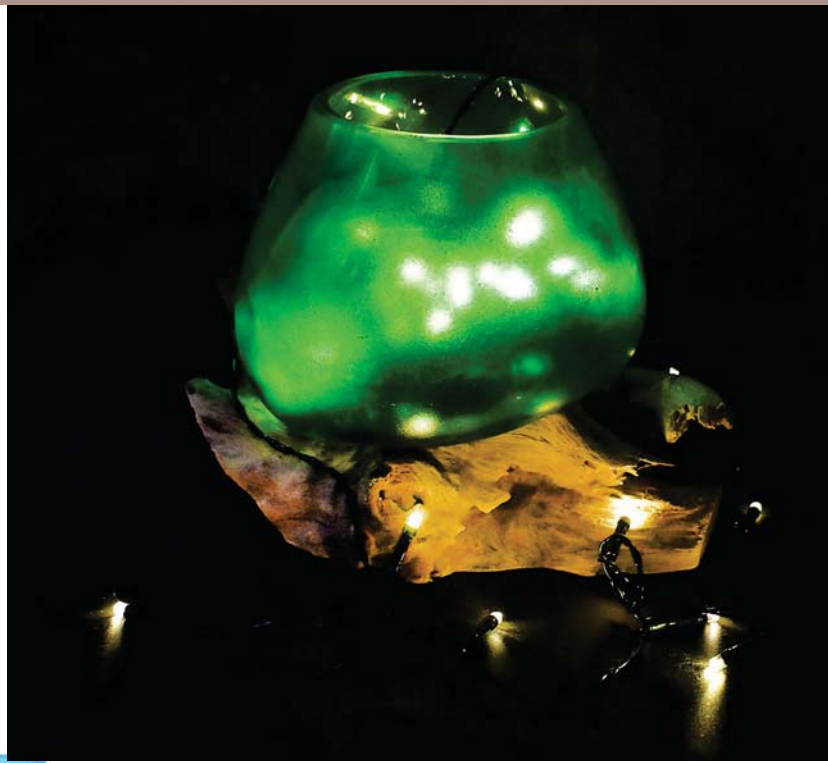
**SB01OR**  
17-21cm ht orange



**SB01Y**  
17-21cm ht yellow



**SB01R**  
17-21cm ht red





# Dreamcatchers

## Keyrings

Diameter 4.5cm

NEW



DCKEY01  
purple



DCKEY02  
blue



DCKEY03  
turquoise



DCKSET



DCKEY04  
green



DCKEY05  
yellow



DCKEY06  
orange



DCKEY07  
red



DCKEY08  
rainbow



DC40  
purple 10cm



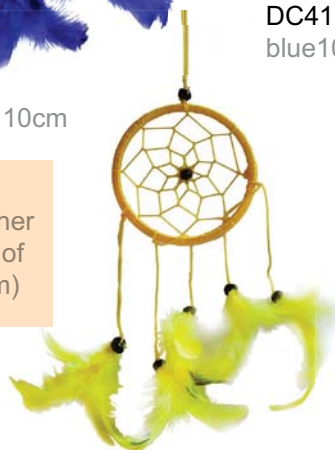
DC41  
blue 10cm



DC42  
turquoise 10cm



DC43  
green 10cm



DC44  
yellow 10cm



DC45  
orange 10cm



DC46  
red 10cm

DCCHAK2  
dreamcatcher  
chakra set of  
7 (dia 10cm)



# Pastel coloured dreamcatchers

NEW



DCC40  
bamboo 17cm  
blue grn yell



DCC41  
bamboo 17cm  
turq pink



DCC42  
bamboo 17cm  
pink blue wh grn



DCC44  
bamboo 17cm  
grn wh brown



DCC2228  
42cm light green



DCC2227  
42cm mixed cols





## Seaside whitewash bamboo windchimes

From a small workshop near Ubud, Bali, run by Titi Mertha (far left), who has supplied us for many years. We loved hearing how much our orders support her and her family. It is important to everyone at Shared Earth that we make a massive improvement to artisans' lives. A single order can go a long way for our suppliers and that means so much to us!

NEW



BBAM49  
seagull



BBAM50  
puffin



BBAM51  
yacht



BBAM56  
fish boat  
anchor



BBAM55  
starfish



BBAM54  
anchor



BBAM53  
lighthouse



BBAM52  
fish





## Recycled glass mobiles

These new additions to our recycled glass mobile range are made by a young couple with two children in Tegallalang, near Ubud, the heart of the crafts industry in Bali.

The first two are a wonderful example of creativity, showing how simple pieces of broken glass can be painted and put together to make an attractive chime, and not just attractive visually. They also produce a calming sound when touched by the wind.

The other designs are a great step forward, similar to our suncatchers, but the upper part in albesia wood, so no plastic involved - we recommend them!



**SUS22**  
mobile col pieces  
30x50cm



**SUS23**  
mobile col pieces pagoda  
25x60cm

## Recycled glass and albesia wood



**SUW011**  
mobile 2 birds  
20x33cm



**SUW013**  
mobile rainbow  
28x47cm



**SUW01A**  
mobile bird blue/yellow  
asst. 13x33cm



**SUW05**  
mobile love  
20x30cm



**SUW06**  
mobile peace  
20x25cm



**SUW07**  
mobile dragonfly  
14x40cm




**SUW08A**  
mobile bee  
15x40cm



# A fairer, sustainable world

On 23 December Shared Earth's founder Jeremy Piercy will be **70**, yes, **70**. And to mark this memorable event, we are asking **70** people to join us to raise **£70,000** to help create a fairer, more sustainable world.

How on  are we going to do this?



We're going to plant trees, reclaim the desert and improve the lives of rural villagers in Mali, West Africa.

We're going to build river barriers to stop plastic flowing into the oceans in Bali.

We're going to work with disadvantaged artisans around the world to develop their skills.

We're going to build an eco/Fair Trade showroom in Bali, to attract buyers for struggling artisans there.



Half of the carbon emissions generated in the world are caused by buying and selling. As a business, you can help to tackle climate change! By supporting one (or all) of these projects, you will be helping to create a fairer, more sustainable world.

**These are the organisations we will be working with:**

## Planting trees, reclaiming deserts

Mali is one of the poorest countries in the world, and also one of the worst affected by climate change. As the Sahara desert encroaches onto its agricultural land, flash floods, a shorter rainy season and soaring temperatures have forced thousands of villagers to leave their homes and migrate south.

**Joliba Trust** works in 350 villages in Mali, stabilising sand dunes, planting trees, improving crop yields, and even recovering desert where nothing will grow. Trees grow far faster than in Europe, and many provide fruits, leaves and nuts too. Joliba has just one low-paid worker in the UK, most of its work being done by local people in Mali, so admin costs are minimal. And for a donation of £100 each month, for one year, a whopping 13,000 trees can be planted in Mali, ten times as many as this sum could buy in the UK!

For more information: [www.jolibatrust.org.uk](http://www.jolibatrust.org.uk)



## Stopping plastic flowing into the oceans

**Sungai Watch** in Bali builds river barriers to prevent plastic flowing into the oceans. Global corporations wrap more and more products in single-use plastic, and as waste collection services are often non-existent or minimal, waste is often burnt, or ends up in the streams and rivers. Sungai Watch has built 180 barriers in Bali, collecting over 1 million kg of plastic in just 2 years. It also runs community clean-ups each week at illegal dumps, beaches and along riverbanks. Everything is recycled, or composted.

Detailed records are kept of each plastic wrapper, and the charity then writes to the companies whose brands appear most often, pushing them to find less harmful alternatives.

A donation of £300/month will pay for a barrier on a new river, potentially collecting 5,000kg of plastic in its first year alone.

For more information: [www.sungai.watch](http://www.sungai.watch)



## Supporting disadvantaged producers

**Transform Trade** (formerly Traidcraft Exchange) partners with farmers, workers and artisans to help them benefit from more sustainable and equitable trade. Traidcraft plc went into receivership early in 2023 and Transform Trade has set up a Producers' Fund to support the most marginalised artisans, including those affected by loss of orders as a result of Traidcraft's sad demise.

Whether it's training, equipment, product development or market access, Transform Trade, which has local offices in India, Bangladesh, Tanzania and Kenya, can work on the ground to support the smallest producer groups who need help most. For more information: [www.transform-trade.org](http://www.transform-trade.org)



## Sjahlendra Handicrafts

Sjahlendra Handicrafts is a new business in Bali, which aims to provide security to artisans who are struggling to survive in the absence of regular orders for their products. They use local, sustainable raw materials such as bamboo, albesia wood; coconut, tree roots and driftwood; and recycled glass, paper and textiles. Minimal machinery and energy usage results in very low carbon emissions during production.

Women own and run 65% of the 30-odd producer groups, with 15% run by husband/wife teams and 20% by men. The CEO of Sjahlendra Handicrafts is also a woman.

We're going to build a showroom in Ubud, Bali's craft centre, to attract commercial buyers: a one-stop shop for eco and Fair Trade products, including, we hope, a café and rooms at the back for visitors. Any profits will be used to further the interests of the producers.

A donation of £100/month would buy the space for 6 or 7 artisans to display their products, equivalent to a year's worth of orders for an artisan and their family. We estimate we need £40,000 to get this project off the ground, potentially giving extra work for 1,000 artisans and their families, for many years to come!

For more information: [www.sharedearth.co.uk](http://www.sharedearth.co.uk) or [www.sharedearth-trade.co.uk](http://www.sharedearth-trade.co.uk)



However small or large your business, you can help to tackle climate change, and create a fairer, more sustainable world!

It's a law of the universe that you always get back what you give to others, whether it's money, time, care, thought or prayer. So we ask you to give generously; you will be rewarded!

*Every donor of £10/month or more (or one-off donation of £120 +) will be entered into a free draw, and the winner will receive a fully-paid for trip to Bali, with the chance to visit producers, see Sungai Watch's river barriers and of course, have a great time!*

## **How to join us:**

You can write to us (at 1 Minster Gates, York YO1 7HL), email [jp@sharedearth.co.uk](mailto:jp@sharedearth.co.uk), phone us on 01904 655314, or view [www.sharedearth-trade.co.uk](http://www.sharedearth-trade.co.uk). We welcome all feedback and suggestions.

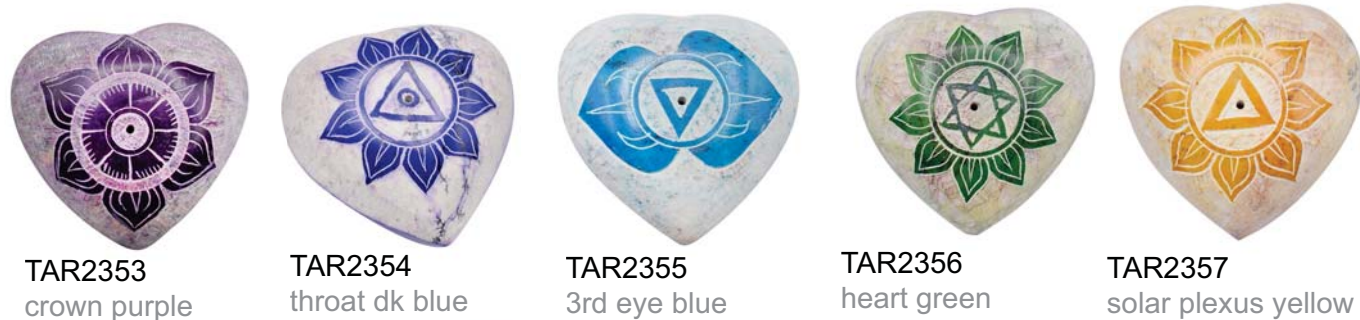
In collaboration with the Zuri Foundation we are setting up a new charity with the Charity Commission, to ensure that all funds are transparent and accountable. If you'd like to make a donation, see the Just Giving option on our website, give us a ring or email us if you have any questions. You can also email Helen at The Zuri Foundation, [helenscanlan@hotmail.com](mailto:helenscanlan@hotmail.com).

Every offer will be appreciated. We thank all our customers in advance for your support – please tell your friends and families, and spread the word. Together, we can change the world!





## Heart pebble incense holders



## Soapstone lotus incense holders



## Oil burners





## Lotus Pebbles



TAR2341  
6.5cm green



TAR2340  
6.5cm brown



TAR2343  
6.5cm black



TAR2342  
6.5cm pink



TAR2344  
6.5cm blue



TAR2345  
6.5cm red

## Chakra Pillboxes



TAR2367  
crown purple



TAR2368  
throat dk blue



TAR2369  
3rd eye blue



TAR2370  
heart green



TAR2371  
solar plexus yellow



TAR2372  
sacral orange



TAR2373  
root red



## The 5 elements pebbles



TAR2384  
earth



TAR2385  
air



TAR2386  
fire



TAR2387  
water



TAR2388  
spirit



TAR2381  
chakra set of 7 pebble incense  
holders in pouch (3.5cm dia)



## Soapstone incense holders

Tara Projects in New Delhi is one of the oldest Fair Trade organisations in India, and are one of our longest standing suppliers. However at the moment many of their artisans are struggling to obtain work (see back cover). We hope you like these new products and will place orders for them!

NEW



TAR2375  
pebble tree + hearts blue



TAR2382  
square plate  
yell/pur/blue



TAR2383  
square plate  
om



TAR2374  
pebble om



TAR2377  
lotus red



TAR2378  
hamsa hand yellow



TAR2379  
floral blue



TAR2380  
3 pebbles in  
cotton pouch



TAR2376  
pillbox tree + hearts  
blue



## Iron bells and chimes

Made by artisans in New Delhi, India, out of recycled wrought iron, these bells are a wonderful addition to our metal chime range. The scrap iron is shredded so that less energy is used in the melting process. After the iron is melted, it is then cooled and solidified into these carefully shaped bells and chimes. Wrought iron is a good recycled metal as it has a low carbon content and the recycle process saves energy whilst retaining original quality.

Aspiration International is a Fair Trading Organization, which works for the welfare of artisans and their families all over India, by promoting and developing cottage industries, improving social and economic conditions and providing fair wages to the artisans.

NEW



ASP2387  
patterned w  
beads  
8x35cm



ASP2388  
patterned  
w beads  
10x44cm



ASP2389  
patterned  
w beads  
12x48cm



ASP2375  
star w face  
6x11cm



ASP2376  
star w face  
9x13cm



ASP2377  
moon  
4x12cm



ASP2378  
sun w face  
9x14cm



ASP2379  
heart  
5x12cm



ASP2380  
hamsa hand  
9x18cm



ASP2381  
bird  
8x11cm



ASP2382  
dragonfly  
9x15cm



ASP2383  
owl  
7x17cm



ASP2384  
butterfly  
6x10cm



ASP2385  
elephant  
6x10cm



ASP2386  
elephant  
10x13cm





**JUG2202**  
weekend bag 38 x 34 x 21cm  
blues

## Bags

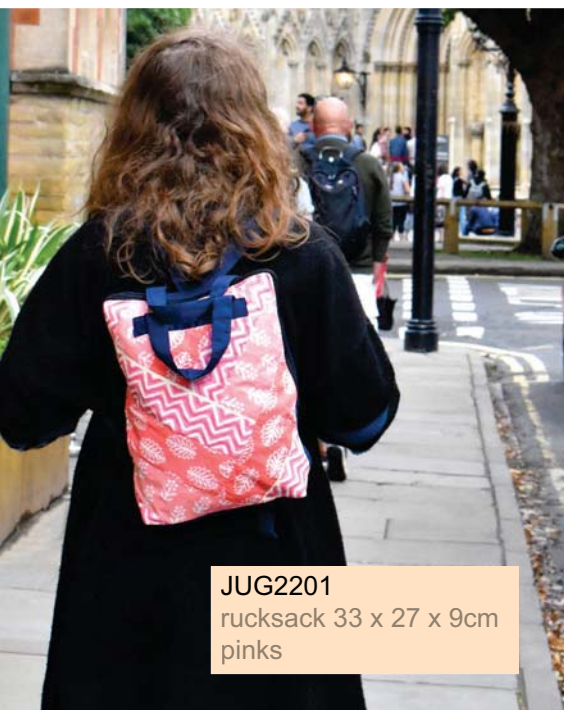
'Jugaad' is the nerve centre of Karm Marg, the home for street children which we support. Its aim is to empower vulnerable young adults with livelihood skills, at the same time generating income for the home. 'Jugaad' is a Hindi word meaning 'making the most out of however little may be available to you', Karm Marg encourages friends and volunteers to donate waste newspaper, textiles and bottles for them to use as raw materials.

Jugaad is a way of life for them, transforming waste into products like these trendy, usable bags which will last for years.



NEW

**JUG2200**  
rucksack 33 x 27 x 9cm  
blues



**JUG2201**  
rucksack 33 x 27 x 9cm  
pinks



**JUG2201**  
rucksack 33 x 27 x 9cm  
pinks



**JUG2202**  
weekend bag 38 x 34 x 21cm  
blues



**JUG2204**  
yoga mat bag  
77 x 18cm blues



**JUG2203**  
weekend bag 38 x 34 x 21cm  
pinks



**JUG2205**  
yoga mat bag  
77 x 18cm pinks



**JUG2206**  
wash bag 26 x 17 x 9cm  
blues



**JUG2207**  
wash bag 26 x 17 x 9cm  
pinks



NEW



FN1410  
wool rainbow  
scarf very long  
210cm



FN1414  
wool rainbow  
computer gloves

## Rainbow wool

Rainbows - the symbol of diversity, and as popular as ever! These high quality wool accessories are made by our Fair Trade suppliers in Nepal.



FN1411  
wool rainbow hat



## Earrings and ear studs from India



TAR2351  
ear studs tree of life



TAR2350  
earrings tree of life w  
beads



TAR2352  
ear studs leaf







## NEW! jute bags

Hand printed by Earthbags in Kolkata, India. Shared Earth's fun bags are strong and long-lasting and are made with sustainable jute. Earthbags gives employment to women and self-help groups in Kolkata, and strives to help the environment by encouraging more and more people to use earth-friendly bags.

Their factory won a Gold Standard for its eco features recently; and they're Fair Trade too!



EA2380  
sun moon



EA2381  
green man



EA2382  
tree of life



EA2383  
hare and moon



EA2384  
chakra



# Christmas jute bags

Most of our Christmas jute bags sold out last year and we suspect these will too - to be certain of stock, we recommend you order early! as we only order limited quantities of Christmas designs.

NEW



EA2392  
robins bottle bag  
10x10x36cm



EA2390  
robins 30x30x20cm



EA2391  
robins  
25x25x10cm



EA2123  
reindeer 30x30x20cm



EA2125  
reindeer  
20x20x10cm



EA1776  
30x30cm



EA2120  
merry xmas  
30x30x20cm



EA2121  
merry xmas  
25x25x10cm



EA2122  
merry xmas  
20x20x10cm

EA2124  
reindeer  
10x10x36cm





## Olive wood decorations

These decorations and nativities are made from olive trees, a symbol of peace. Each item is carefully carved using prunings from the young trees and the sprouts from the trunks of the old unproductive trees, all locally sourced. The wood is collected without harming or destroying the ancient trees.

The Holyland Handicraft Cooperative Society is a guaranteed WFTO member in the Palestinian town of Bethlehem. It supports 35 producer groups bringing work to 2000 individuals. Partnerships include local women's enterprise groups and organisations that support people with disabilities.

NEW



**HOL03**  
xmas dec angel w  
3 stars



**HOL05**  
xmas dec mary and  
joseph w palm tree



**HOL01**  
xmas dec olive  
wood tree



**HOL02**  
xmas dec star



**HOL04**  
xmas dec mary  
and joseph etched



**HOL06**  
xmas dec star



**HOL07**  
xmas dec dove



**HOL08**  
xmas dec  
tree etched



**HOL09**  
xmas dec mary and  
joseph w donkey



**HOL10**  
mary, joseph, donkey  
heart shape



**HOL11**  
3 kings bell shape



**HOL20**  
nativity w palm tree  
5x3x6.5cm ht



**HOL21**  
nativity mary, joseph,  
palm tree 5x4x6.5cm



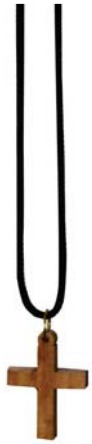
**HOL22**  
nativity star at top  
6x5x8cm



**HOL23**  
nativity angel at back  
7.5x4.5x9cm



## Olive wood pendants



HOL30  
cross



HOL31  
dove



HOL32  
cross carved inside



HOL33  
Jerusalem



HOL40  
cross 5 x 1 x 9.5cm



NA2354  
9.5x4.5x10cm



NA2355  
15.5x4.5x15.5cm



NA2356  
16.5x4.5x12.5cm



NA2357  
16.5x7.5x14cm



NA2358  
17.5x14.5x15cm



NA2359  
30x4.5x16cm



NA2360  
19.5x9x28cm



NA2361  
42.5x5x16cm

## Light up nativities

Made from part-recycled metal,  
by our Fair Trade suppliers in  
Kolkata, Noah's Ark.





**NA2281**  
metal c holder  
deer in woodland

**NA2280**  
metal c holder  
stag 13cm ht



**NA2283**  
metal c holder  
nativity 15cm ht

**NA2282**  
metal c holder  
nativity 12cm ht

## Metal candle holders

These cut-out metal candle holders make a stunning addition to a Christmas table or living room.



**TARTNB1264a**  
candle holder  
stars blue  
16.5cm ht

**TARTNB1265a**  
candle holder  
stars blue  
11.5cm ht



**NA2284**  
metal c holder  
nativity 18cm ht



NEW



NA2136  
recycled metal  
chime bird



NA2351  
wood puzzles  
box 20



NA2352  
brass embossed  
boxes/box of 20



NA2353  
hanging bells/box of 20



## Stocking fillers



XMAS01  
50 assorted mini Christmas gifts and free wrap

XMAS01K  
50 assorted mini Christmas gifts for kids and free wrap

SPECIAL  
OFFER!



XMAS03  
100 assorted Christmas gifts and free wrap

XMAS03K  
100 assorted Christmas gifts for kids and free wrap

## WRAP UP FOR CHRISTMAS!

XMAS04 100  
asst. sheets of  
handmade paper  
giftwrap, less than  
half price at only  
£79.50!





NEW



## Festive Bamboo Socks

Take a peep at these new festive themed bamboo socks! A fantastic Christmas gift for your friends and loved ones, and of course to wear on the day to show how cool you are (ALL the best people wear bamboo socks these days). The robins design is all set to be a bestseller straight away, we think.



ASPB005L  
robins lar  
ASPB005M  
robins med



ASPB006L  
green lar  
ASPB006M  
green med



ASPB007L  
santa lar  
ASPB007M  
santa med



GOP17308  
Bestselling Christmas  
stocking, kantha stitch  
Assorted colours

Now in its  
7th year!



## Recycled sari stocking

Handmade from 100% recycled silk sari fabric, each features a unique combination of 2 contrasting fabrics.



CRC210  
recy silk sari xmas  
stocking asst.





## Christmas finger puppets



CIAP031  
santa



CIAP032  
snowman



CIAP2320  
robin



CIAPX02  
owl



CIAPX04  
monkey with  
santa hat



CIAPX05  
giraffe



CIAPX06  
sheep



CIAPX09  
dalmation with  
santa hat



CIAPX11  
frog



CIAPX12  
bee



CIAPX13  
hedgehog



CIAPX14  
jaguar



CIAPX15  
camel

## Festive sentiment pebbles

Now in their 10th year and  
still as popular as ever.



TAR14085



TAR14086



TAR14087

## Christmas scents

Enjoy the timeless aromas  
of Christmas cheer: spices,  
frankincense and myrrh.



AUR038 frankincense



AUR036 myrrh



AUR1401 christmas spice



AUR1402 winter clove



AUR1403 spiced cranberry



AUR1404 warm gingerbread



AUR1405 cinnamon & orange



AUR1400

gift set - Christmas scents





## Goldwork embroidered decorations

Exquisite goldwork detail handstitched onto these premium quality British wildlife and vegetable tree decorations. From a specialist supplier in New Delhi, India.



NEOB426  
toadstool





NEW



**X001**  
6cm red w  
snowflake



**X002**  
6cm dark blue w  
white scroll



**X003**  
6cm white w  
xmas tree



**X005**  
6cm teal w  
snowflakes



**X004**  
bauble 6cm red  
w white stripes



NEW



**PJX019**  
xmas dec  
tree black w  
crosses



**PJX020**  
xmas dec tree  
black w circles



**PJX023**  
angel green w  
spots



**PJX024**  
angel brown  
spots



**PJX025**  
angel hand  
in air



**PJX026**  
angel yellow

These wooden decorations are made by a small woman-owned workshop near Ubud, Bali.



**PJX016DB**  
dk blue



**PJX016LB**  
light blue



**PJX016G**  
green



**PJX016Y**  
yellow



**PJX018R**  
red

NEW



**PJX022**  
tree hanging  
red yellow gold  
16x46cm



**PJX035DB**  
tree 3D  
dark blue



**PJX035G**  
tree 3D  
green



**PJX035LB**  
tree 3D  
light blue



**PJX035R**  
tree 3D  
red



**PJX035Y**  
tree 3D  
yellow



**PJXMAS01**  
xmas tree grey  
14x14x40cm  
(folds flat)



# Recycled and Eco hanging decorations



SASH2280  
turtle



SASH2282  
toucan



SASH2281  
elephant lilac



SASH2157  
dinosaurs  
2 asst



SASH2156  
horses asst cols



SASH2158  
double bauble asst cols

## Paper Mache



ASH2235  
rabbit yellow  
blue flowers



ASH2242  
egg floral  
yellow  
4.5cm



ASH2243  
egg blue w  
daisies  
4.5cm



SASH2155  
star pompom  
asst



PRX001  
tree  
colourful



PRX003  
ball



PROKX009  
star wool orange  
pink blue



M010  
angel 9cm



M011  
angel 9cm



M012  
tree 9cm



M015  
angel  
10-11cm ht



M013  
manger  
8x7.5cm



M014  
angel  
13.5cm ht.



M065  
heart hanging  
8.5cm



PROKX012  
keya leaf dove  
asst colours



Papier Mache is a great way to use waste paper and the painting achieved is often stunning. A special collection, handmade in Kashmir, India.



ASH2100  
black yellow  
2" dia



ASH2101  
brown yellow  
2" dia



ASHX216  
bell red 5.5cm ht



ASHX217  
bell gold 5.5cm ht



ASH2102  
grey pink  
2" dia



ASHX211  
red cat 6.5x5.7cm



ASHX212  
cat dk blue 6.5x5.7cm



ASHX213  
cat lt blue 6.5x5.7cm



ASHX214  
cat gold 6.5x5.7cm



ASHX219  
3 kings 6cm



ASHX220  
manger 6cm



ASHX222  
holy city 6cm



ASHX224  
flowers green w  
blues 6cm



ASHX225  
flowers + birds  
yellow 6cm



ASHX226  
flowers gold 6cm



ASHX227  
father xmas w  
tree 5cm



ASHX17301  
santa, 5cm



ASHX17302  
reindeer, 5cm



ASHX210  
floral gold 5cm



ASHX207  
xmas dec hedgehog



ASHX200  
xmas dec woodland  
star 10cm



ASHX201  
xmas dec woodland  
moon 10cm



ASHX238  
xmas dec bauble  
8cm  
ASHX237  
xmas dec bauble  
5cm



ASHX235  
xmas dec  
tree 11x9cm



ASHX236  
xmas dec  
heart





## Handmade felt decorations

More quirky felt Christmas decorations from Mumbai, India.



ASHF01  
snowman green  
10cm



ASHF02  
snowman red  
10cm



ASHF05  
llama  
11cm



ASHF06  
bee  
6cm



ASHF08  
reindeer  
13cm



ASHF10  
polar bear



ASHF12  
lemur



ASHF13  
owl



ASHF15  
puffin



ASHF17  
sheep



ASHF27  
sloth with hat  
9cm



ASHF41  
flamingo



ASHF50  
rainbow heart



ASHF03  
avocado  
13cm



ASHF42  
camel



ASHF44  
robin



ASHF14  
turtle



ASHF46  
squirrel



ASHF49  
rainbow



ASHF45  
flying pig

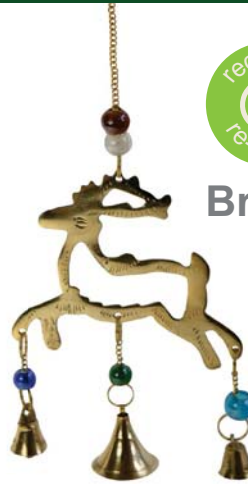




**ASH2270**  
dove hanging mango  
wood offcuts



**ASHX19708**  
star hanging mango  
wood offcuts



**ASP16700**  
reindeer  
22x9cm



**Brass**



**ASP16701**  
xmas tree  
22cm ht



**PJXMAS02**  
white stars  
31 x 40cm red



**PJXMAS03**  
white stars  
31 x 40cm green

**Made with  
driftwood**



**PJXMAS04**  
white stars  
31 x 40cm grey

**NEW**



**PJX014**  
dove



**PJX027**  
mobile 3 doves w  
gold string

Made from sola, a fast-growing plant  
that is 100% renewable



**SASH2250**  
sola tep  
6cm



**SASH2256**  
sola tep  
8cm



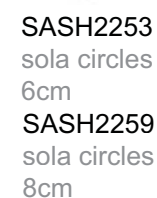
**SASH2252**  
sola stripes  
6cm



**SASH2253**  
sola circles  
6cm



**SASH2255**  
sola 8cm  
'fungi'



**SASH2254**  
sola 7.5cm  
logs



**WD1903**



**WD2805**



**PJX01**  
19cm ht



**PJX03**  
11cm ht



# Lanterns



ASH2140  
20cm red



ASH2145  
27.5cm red + multi



ASH2144  
20cm red + multi



ASH2146  
20cm orange + multi



ASH2148  
20cm green + multi



## African Angels



Z19711  
cream with flute  
7cm ht



Z251  
sisal angel with trumpet assorted colours  
10.5cm ht

## African Santa collection

These amusing santas from Africa, made in Kenya from grasses, raffia and other local materials, were a great hit last year, most of them selling out well before December. We recommend them.



Z19700  
santa on  
reindeer



Z19701  
santa on camel



Z19702  
santa on  
elephant



Z19703  
santa on giraffe



Z19704  
santa on zebra



Z19706  
santa in car



NEW

## Hand-carved painted wooden birds

More handcarved and painted birds from Bali, made with sustainable albesia wood. We're very impressed with the work that goes into crafting these, especially since the artisans have never seen these British birds.

On our recent visit to Bali, we visited Wayan Dirga (pictured below). He is using one of the drills supplied by us last year, when £8,000 of our profits were used to distribute tools to our producer groups in Bali.



BNB2204  
pied wagtail  
20cm width



BNB2206  
dipper  
18cm width



BNB2203  
hedge sparrow  
13cm width



BNB2211  
golden eagle  
23cm width



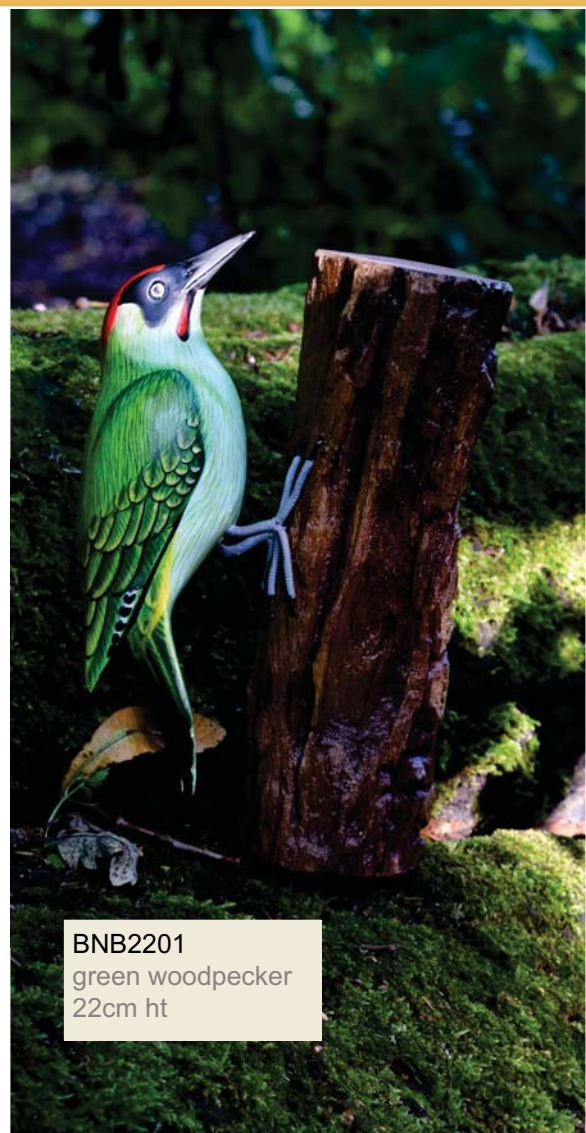
BNB2212  
herring gull  
21cm width



BNB2213  
heron 37cm ht



BNB2214  
swan  
27x13x24cm



BNB2201  
green woodpecker  
22cm ht





## The Green Man!

NEW

More beautifully handcrafted products from Bali! Made from Jempinis wood, the designs are directly carved into the tree and the original form remains as part of the natural organic look.

The Green Man represents renewal, growth and ecological awareness. These handcarved sculptures are very much in keeping with the growing concern around the world to tackle climate change and create a sustainable future.



GM01  
green man  
50cm



GM04  
green man  
50cm



GM07  
green man  
50cm



GM08  
bird house owl  
22cm



GM09  
bird house  
green man  
30cm





NEW



BBEAR06  
2 bears pony and trap



BCAT22  
2 cats pony and trap



BCAT21  
cat w blanket on sofa

Cats, dogs,  
meerkats,  
bears  
and...



BDOG07  
dog w blanket on sofa



BCAT20  
2 cats on grey sofa



BDOG06  
2 dogs on grey sofa



BPAN01  
2 pandas on grey sofa



BMOON01  
moon + 2 cats



BMOON03  
moon + 2 meerkats



BMOON02  
moon + 2 dogs



BMOON04  
moon + 2 bears



HH02  
hamster house bamboo  
16x8.5cm



TARWS04  
woodblock set 6 UK animals





## Soapstone t-lites and oil burner

This Indian soapstone is called “Gorara Stone” and is purchased by artisans in the local market in the city of Agra, Uttar Pradesh.

The colour and patterns within the stone vary, making each product unique. The intricate carving needs highly skilled craftsmanship - excellent presents for Christmas.



ASH23988  
T-lite holder round



ASH23989  
T-lite holder round w base



ASH23990  
T-lite holder egg-shape



ASH23991  
carved soapstone oil  
burner sq tree design



## Floral paper mache gifts

Following the popularity of our woodland paper mache designs, we're introducing this new floral range. Everything is handpainted, using a traditional style of art.



ASH2380  
small oval box 6 x 5cm



ASH2382  
round box 8cm dia



ASH2381  
small oval box  
8x7cm



ASH2385  
incense holder



## Tree decorations



ASH2383  
hedgehog  
10x5x6cm



ASH2386  
hanging heart



ASH2388  
hanging star



ASH2390  
bauble 6cm  
ASH2391  
bauble 8cm



ASH2384  
rabbit



ASH2387  
hanging moon



ASH2389  
tree

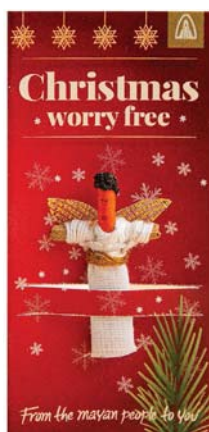


# Worry dolls

Worry dolls are made by villagers in rural areas of Guatemala. Here is a new selection -



WD2302  
angel



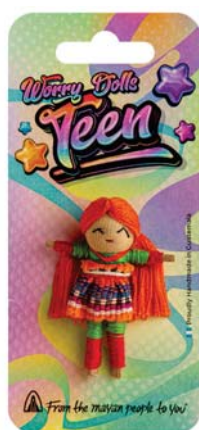
WD2303  
santa claus



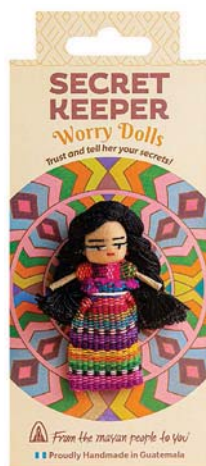
WD2304  
snowman



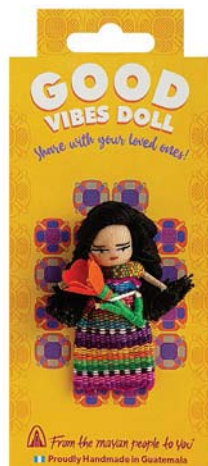
WD2305  
reindeer



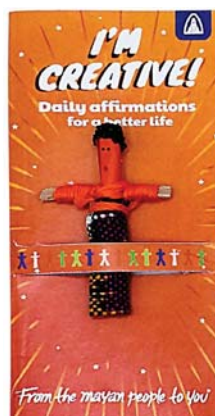
WD2310  
teen worry-free dolls on card (6 asst)



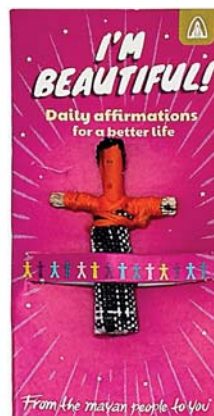
WD2300  
secret  
keeper 6cm



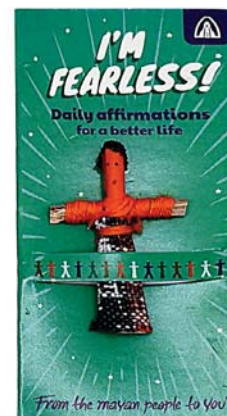
WD2301  
good vibes



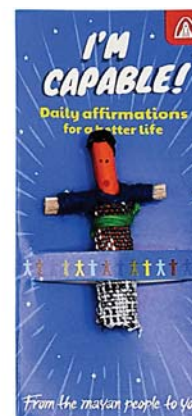
WD2311  
i'm creative



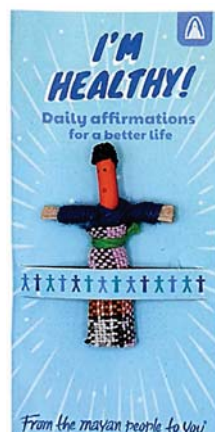
WD2312  
i'm beautiful



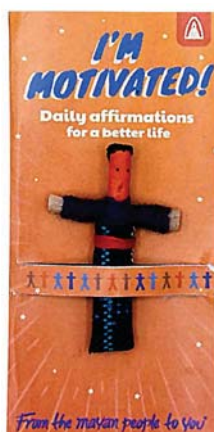
WD2313  
i'm fearless



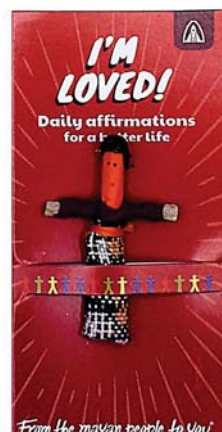
WD2314  
i'm capable



WD2315  
i'm healthy



WD2316  
i'm motivated



WD2317  
i'm loved



WD2318  
i'm courageous



## Incense and candle gift sets



**BARA602**  
incense cone set stars



**BARA603**  
incense cone set hearts



**TTH016P**  
rose candle/incense  
holder gift set pink



**TTH016R**  
rose candle/incense  
holder gift set red

## Fair trade rubber and gardening gloves

These gloves are made from Fair Trade latex and natural rubber harvested by small-scale farmers in Sri Lanka. The farmers earn a premium from the exporters, who have also invested in education, medical support and correct rubber tapping knives. They also provide training to the farmers on the best ways to care for the trees, and manage the land they grow on.



**TC03**  
rubber gloves



**TC01**  
gardening gloves  
(medium)

**TC02**  
gardening gloves  
(large)



Traidcraft gardening gloves are cut, tear and puncture resistant with a cotton lining and elasticated cuffs.





HOG57BB94



HOGACI27



HOGACI28



HOGBEA143



HOGDCT101



HOGDCT115



HOGDCT116



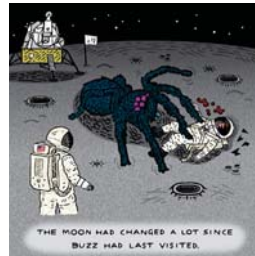
HOGHMI48



HOGOTWI01



HOGOTWI05



HOGOTWI06

HOGOTWI05



HOG57BB95



HOG57BB96



HOG57BB97



HOG57BB98



HOG57BB99



HOGDCT108



HOGDCT109



HOGDCT113



HOGHMI45



HOGHMI46



HOGHMI47



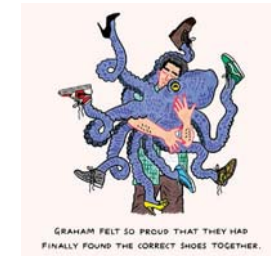
HOGOTWI02



HOGOTWI03



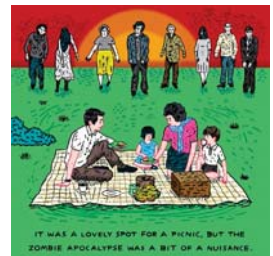
HOGOTWI04



HOGOTWI07



HOGOTWI08



HOGOTWI09



# Christmas Cards

A great selection of amazing Christmas cards from our eco friendly UK artist, Sally Anson. This is the future for greetings cards - no cellophane bag, biodegradable or otherwise, just a peelable sticker which holds the envelope and card together. The paper is FSC-certified and a percentage of profit is donated to support wildlife charities. **Size 15x15cm**



SWECX004  
nelly



SWRBX004  
sheep



SWCBX027  
fox cubs



SWECX009  
giraffe



SWECX016  
hen harrier



SWDX001  
hare



SWDX002  
swan



SWDX003  
hedgehog



SWDX004  
sheep



SWDX005  
calf

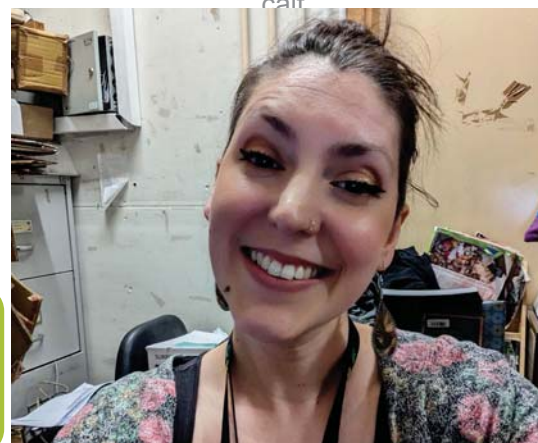
## Well done Liverpool!

Shared Earth Liverpool has just been announced a finalist in the regional Retail Business Awards 2023.... Well done everyone who works there, and our customers for nominating and supporting us! The winner will be announced at a black tie ceremony in Manchester on 17 September (do any of our staff have black ties or even know what they are??). If we win, we will be entered into the national final.

If you go to the Spring or Autumn Fairs, you'll know Jen, who manages the shop. She's been with us for nearly 17 years and is on our Board of Directors. Her generous spirit shows in the way she deals with staff, some of whom have been with us since we took over the shop from Traidcraft's shop 'Bold Justice' in 2006. Without her commitment, hard work and good spirit, which she transfers to our staff, it's unlikely we would have got so far in this competition.

We're also a finalist because of the products we sell, of course. Climate change is on the news pretty much every day, and with our emphasis on recycling and sustainability, we're just the right place for shoppers to go to buy products which are low in carbon emissions, both the raw materials used and in the methods of production. By selling our products, you too, our customers, are helping to tackle climate change, and you're right on-trend with the way that retail is going at the moment, too.

Jen  
pictured  
right,  
Liverpool  
shop below







## Chocolate

Cocoa Loco is an award-winning organic and Fair Trade brand which we are delighted to present here for the first time. It's handmade in Sussex, and comes in 100% plastic-free packaging. The chocolate is from the Dominican Republic, from small-scale growers who are supported and certified by the Fair Trade Foundation and the Soil Association.



COC01  
72% dark



COC02  
dark cocoa nibs &  
hazelnut



COC03  
dark w chilli & lime



COC04  
dark sea salt



COC05  
dark w orange



COC06  
dark w mint



COC07  
swirly marbled



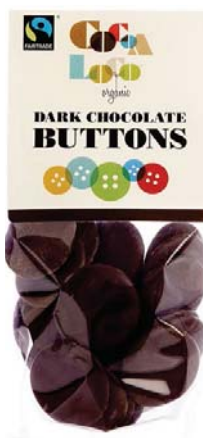
COC08  
milk



COC09  
fruit and nut



COC10  
lemon drizzle



COC11  
choc buttons dark



COC12  
choc buttons milk





# Earth Overshoot Day

It's our August catalogue, and we - the world - used up the resources which can be regenerated in a year, on 2nd August. That's over 4 months earlier than the first Earth Overshoot Day in 1971, when it was on 25th December.

We in the UK 'overshot' on 19th May, the same month as many other European nations. Thailand is on 3rd September, Guatemala on 14th November, Indonesia on 3rd December. You can see other countries and learn more on [www.overshootday.org](http://www.overshootday.org).

What can we do to stop using the resources of, effectively, two planets? We can change our individual lifestyles, we can support businesses, which are consciously changing the products they buy and the way they're produced, and we can spread the word, lobbying politicians and other decision-makers we know, from our friends and families right up to local and national level.

This is part of our mission at Shared Earth, and as our customers, thank you everyone for supporting it!

## About Shared Earth UK Ltd

- We opened our first shop in 1986 and started wholesaling in 1991. Shared Earth UK has 10 staff, including 2 designers, who design and develop our jute bags, bamboo socks, and other popular ranges.
- We have 2 key principles, tackling climate change and Fair Trade. We're the no.1 supplier of sustainable and recycled gifts in Europe.
- We offer over 4,000 products, sourced from 20 countries around the world, most of them handmade.
- We believe in you! Together with our customers and our suppliers, we're trying to make the world a better place. We see you as friends and partners; one of our suppliers, Yuliana from Bali, is on our Board of Directors We will do everything we can to support your buying needs and resolve any problems that occur.



EA2304  
fruits

An almost zero-waste bag from India: sustainable jute; eco production; carbon-neutral shipping



TC01-02  
gardening  
gloves

## Fair Trade

## Sustainability



Y2003  
birdhouse driftwood  
kettle from Bali  
**bestseller**



# We are tackling climate change!

**Tara Projects** and Shared Earth would like to send you a big thank you for your support and for continuing to place orders with us, despite the warehouse problems we have been having over the last year. Your orders have enabled us to pay for the restoration of Tara's soapstone workshops in Agra, India. This cost us £5,000, Tara contributing another £2,000. Almost 100 sheets of new corrugated iron were installed to replace faulty roofing and as you can see from the photos, many other improvements were made, a vast improvement for the artisans who work there.



The current work situation for the soapstone carvers is dire, with many having to seek temporary work elsewhere, or staying at home and struggling to feed their families, all this because not enough orders are coming in. For this reason, we have developed more products than we would do normally (see page 20-22 inside); please order generously! In addition, climate disasters have affected many; Moon, CEO of Tara, reports on the recent floods in Delhi, 'water entered many parts of the city, there is a shortage of drinking water... big loss to vegetable growers around the river, their harvests have been washed away... the price of vegetables has gone further high... Thousands have been made homeless'. This is climate change IN ACTION – how it's affecting people's lives.

We hope you will support Tara and their artisans by ordering from us – all products with the code TAR...

**Before**



**After**



**New roof**



**Bathroom renovated**



**Walls painted**